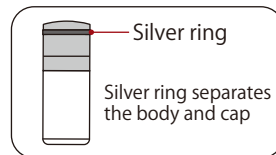
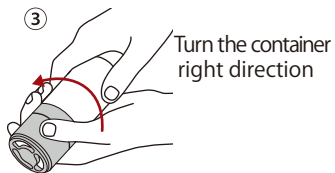
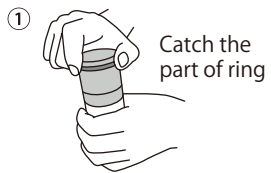


How to use



SALT Ceramic SALT Mill

Newly ground salt
ready to the table directly
without losing natural flavor



How to refill the salt



When you refill the salt, the shadowed part should be lifted and turn the container left.

Character of ceramic mill

- Not to wear easily, you can enjoy consistent flavor for many years.
- Smell does not affects the food materials and does not lose the flavor.
- Ceramic blade's durability is good and can use for many years.
- As the metal is not used, no fear of rusting.

MI-003 Salt Mill


Disclosure of Quality
Lid-Body : Polypropylene resin
(heat-resistance temperature 100°C)
Ring : ABS resin (heat-resistance temperature 80°C)
Container : AS resin
(heat-resistance temperature 70°C)
Blade Portion : Ceramic Porcelain
Container Volume : about 54ml
(capacity of filled water)


※Rarely by the process of production, mixing or unevenness of other colors could be seen in the materials after being ground. But there is no problem for quality of the mill and way of using.

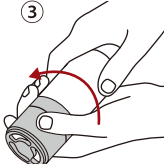
※Before use, please confirm if there is some cracks or injuries in the mill. If there are some, please contact with us. Before use, please read the cautions, and preserve the mill appropriately. Unsuitable handling may cause some troubles.

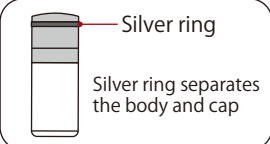
Kawasaki-Plastics CO.,LTD.
401-17 Shimohonai, Sanjo-City, Niigata
955-0021, Japan
TEL. +81256-38-2531
FAX. +81256-38-3666
URL <http://www.kawasaki-plstics.jp/>

How to use

- 

① Catch the part of ring
 - 

② Take the cap by lifting up
 - 

③ Turn the container right direction
- 

Silver ring
Silver ring separates the body and cap



How to refill the sesame



When you refill the salt, the shadowed part should be lifted and turn the container left.

Character of ceramic mill

- Not to wear easily, you can enjoy consistent flavor for many years.
- Smell does not affect the food materials and does not lose the flavor.
- Ceramic blade's durability is good and can use for many years.
- As the metal is not used, no fear of rusting.

MI-004 Sesame Mill

Disclosure of Quality
Lid-Body : Polypropylene resin
(heat-resistance temperature 100°C)
Ring : ABS resin (heat-resistance temperature 80°C)
Container : AS resin
(heat-resistance temperature 70°C)
Blade Portion : Ceramic Porcelain
Container Volume : about 54ml
(capacity of filled water)

※ Rarely by the process of production, mixing or unevenness of other colors could be seen in the materials after being ground. But there is no problem for quality of the mill and way of using.

※ Before use, please confirm if there is some cracks or injuries in the mill. If there are some, please contact with us. Before use, please read the cautions, and preserve the mill appropriately. Unsuitable handling may cause some troubles.

Kawasaki-Plastics CO.,LTD.

401-17 Shimohonai, Sanjo-City, Niigata
955-0021, Japan
TEL. +81256-38-2531
FAX. +81256-38-3666
URL <http://www.kawasaki-plastics.jp/>

How to use

- ① Catch the part of ring
 - ② Take the cap by lifting up
 - ③ Turn the container right direction
- Silver ring separates the body and cap



How to refill the pepper



When you refill the salt, the shadowed part should be lifted and turn the container left.

Character of ceramic mill

- Not to wear easily, you can enjoy consistent flavor for many years.
- Smell does not affect the food materials and does not lose the flavor.
- Ceramic blade's durability is good and can use for many years.
- As the metal is not used, no fear of rusting.

MI-003 Pepper Mill

Disclosure of Quality
Lid-Body : Polypropylene resin
(heat-resistance temperature 100°C)
Ring : ABS resin (heat-resistance temperature 80°C)
Container : AS resin
(heat-resistance temperature 70°C)
Blade Portion : Ceramic Porcelain
Container Volume : about 54ml
(capacity of filled water)

※ Rarely by the process of production, mixing or unevenness of other colors could be seen in the materials after being ground. But there is no problem for quality of the mill and way of using.

※ Before use, please confirm if there is some cracks or injuries in the mill. If there are some, please contact with us. Before use, please read the cautions, and preserve the mill appropriately. Unsuitable handling may cause some troubles.

Kawasaki-Plastics CO.,LTD.
401-17 Shimohonai, Sanjo-City, Niigata
955-0021, Japan
TEL. +81256-38-2531
FAX. +81256-38-3666
URL <http://www.kawasaki-plastics.jp/>