



CERAMIC

SALT

MADE IN
JAPAN



MI-023 SALT

Kawasaki-Plastics CO.,LTD.

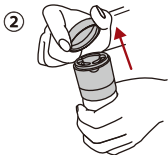
401-17 Shimohonai
Sanjo-shi, Niigata 955-0021
TEL.+81256-38-2531
FAX.+81256-38-3666

URL <http://www.kawasaki-plstics.jp/>

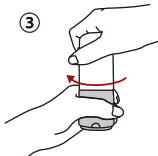
How to Use



Hold the lid.



Lift the lid and remove it.



Hold the container up vertically and turn it clockwise.

Notes on Use

- Only for use for grain black pepper and rock salt.
- For used rock salt, use the indefinite-shape, 2-4 mm size mill. If it is too small or too big it will not grind well.
- For grain black pepper, use a mill of diameter 5.5 mm or less.

Caution

- This product is not made with heat-resistant glass and may break due to sudden changes in temperature. Do not attempt to place in hot water or store in the refrigerator.
- Handle the container carefully when using or washing as it is fragile.

How to Fill with Chili Pepper



- ① When filling the container with salt hold it at the part with diagonal stripes turn it to the left and remove it.



- ② Add the salt in the container.
- ③ Hold the container at the part with diagonal stripes, turn it to the right and close it.

Advantages of a Ceramic Grinder

- Does not wear easily and maintains the same feel when grinding.
- It does not spread the smell to the ingredients and spoil the flavor.
- The ceramic blade is durable and lasts long.
- As it does not use metal, it does not rust.



Caution

- When using, rinse the container with a sponge and dish detergent.
- Upon washing with water, be sure to completely dry the container before use.
- Grinding pebbles and other hard foreign materials may damage the grinder.
Do not use if the blade chips.
- Do not drop it or cause a shock by hitting it against another object.
Do not use if it breaks or chips.
- It may make rubbing sounds when turning the milling stone. This does not affect the quality or its use.
- Do not place near fire. Exposure to heat above its heat-resistance temperature may result in melting or deformation.
- Do not use a glass container that is cracked or chipped or has heavy scratches as it may break and cause unexpected injury.
- Can not be used in dishwashers.
- Polishing with a scrubbing brush or polishing powder may cause scratches.
- Keep out of reach of children.