



CERAMIC

RED PEPPER

MADE IN
JAPAN



MI-022 RED PEPPER

Kawasaki-Plastics CO.,LTD.

401-17 Shimohonai
Sanjo-shi, Niigata 955-0021

TEL.+81256-38-2531

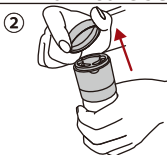
FAX.+81256-38-3666

URL <http://www.kawasak-plstics.jp/>

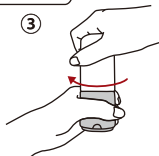
How to Use



Hold the lid.



Lift the lid and remove it.



Hold the container up vertically and turn it clockwise.

Notes on Use

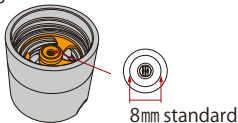
- Meant for use on chili peppers only. Do not use it for other ingredients as it may get damaged.
- Use only with peppers that are dry. Peppers with water content cannot be ground.
- Peppers of width 8mm or more cannot be ground whole. Cut into smaller pieces before grinding.
- Do not spin the blade while the container is empty.

Caution

- This product is not made with heat-resistant glass, and may break due to sudden changes in temperature. Do not attempt to place in hot water or store in the refrigerator.
- Handle the container carefully when using or washing as it is fragile.

Reference for Size of Pepper




Check the width of the pepper using the pin on the back of the container as a guide.



Cut up into finer pieces for peppers of width 8mm or more.



How to Fill with Red Pepper

-  ① When filling the container with pepper, hold it at the part with diagonal stripes, turn it to the left and remove it.
-  ② Remove the pepper stem and place the pepper in the gaps between the dividing board.
-  ③ Hold the container at the part with diagonal stripes, turn it to the right and close it.

Advantages of a Ceramic Grinder

- Does not wear easily and maintains the same feel when grinding.
- It does not spread the smell to the ingredients and spoil the flavor.
- The ceramic blade is durable and lasts long.
- As it does not use metal, it does not rust.



Caution

- When using, rinse the container with a sponge and dish detergent.
- Upon washing with water, be sure to completely dry the container before use.
- Grinding pebbles and other hard foreign materials may damage the grinder.
Do not use if the blade chips.
- Do not drop it or cause a shock by hitting it against another object.
Do not use if it breaks or chips.
- It may make rubbing sounds when turning the milling stone. This does not affect the quality or its use.
- Do not place near fire. Exposure to heat above its heat-resistance temperature may result in melting or deformation.
- Do not use a glass container that is cracked or chipped or has heavy scratches as it may break and cause unexpected injury.
- Can not be used in dishwashers.
- Polishing with a scrubbing brush or polishing powder may cause scratches.
- Keep out of reach of children.