



COFFEE

# Ceramic Coffee Mill **【pure】**

USER GUIDE

MI-015

## **Ceramic Blade**

The ceramic blade will not affect the natural flavor of the coffee beans you grind

## **Granularity Adjustment Screw**

You can choose the thickness / fineness by your own drip method

**Kawasaki-Plastics CO.,LTD.**

401-17 Shimohonai, Sanjo-City, Niigata 955-0021, Japan

TEL.+81256-38-2531 FAX.+81256-38-3666

URL <http://www.kawasaki-plstics.jp/>

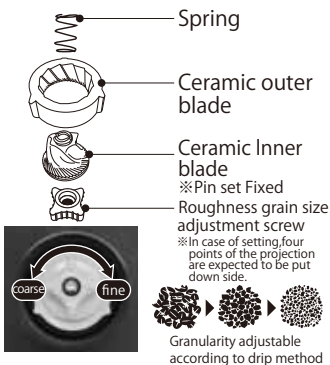
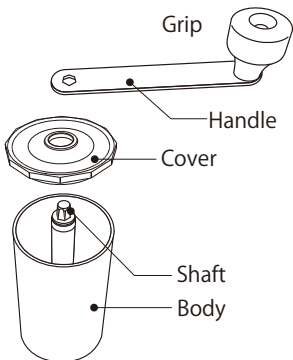
## Please read before use



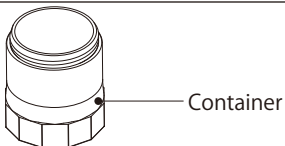
Roughness grain  
size adjustment screw

- The mill is set to fine grinding when shipped.
- Make adjustments to the powder roughness after trying the initial setting.
- Turning the handle with no coffee beans leaves added can damage the ceramic blade.

# Names



- ※To turn right(close)- fine grain
- ※To turn left(loose)- coarse grain



All parts are expected to be set firmly. Otherwise, may cause unsuitable operation or troubles.

## How to use



- 1** Open the cap and put the beans inside the container.  
Capacity of Beans /about 26g  
※It may very depend on level of roasting.



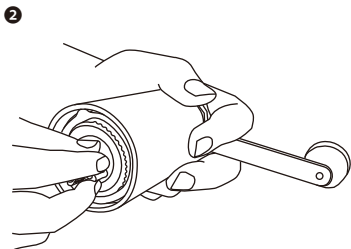
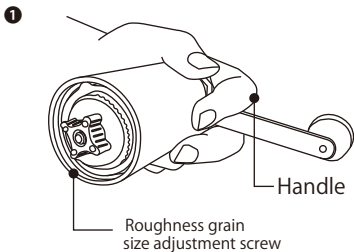
- 2** Adjust the roughness granularity.  
(See roughness grain size adjustment method)



- 3** Close the cap and grinding by turning the handle.  
(Clockwise)

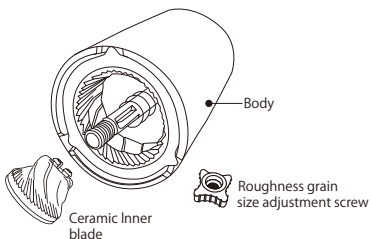
## Roughness grain size adjustment method

(How to turn adjustment screw)

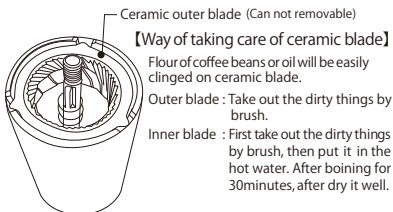


Set the handle, then by controlling it, turn the granularity adjustment screw

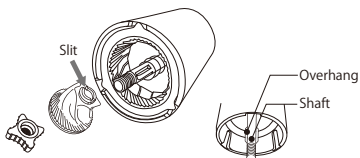
## Way of taking pieces apart



Turn the coarse particle size adjustment screw and remove the ceramic Inner blade.



## Way of setting up



Insert the slit part of the fixed pin to the overhang part of shaft of body. Finally turn the particle size adjustment screw and install.

## Caution

- At first time, clean by cleanser of plates or water. (container only)
- For using at some place, put mill at stabilized condition like on the table of dry surface. At grinding in the air, have mill firmly.
- This mill is only for coffee beans, do not use for other purpose. In case grinding raw or wet beans, it may cause some troubles.
- After grinding, to take all coffee flour from mill is expected. Leave coffee flour in the mill for a long time may cause condensed lump by leaked coffee oil.
- Please be careful not to drop it or hit it. It may cause damage. Please do not use it when it is broken.
- Be careful not to grind some foreign materials like small stones. In case of breaking edge, do not use mill.
- If some strange noise is heard with no effective grinding of handle, adjust screw should be loosen. If used continuously, it may cause some troubles.  
( Turn the adjustment screw to the left.)
- If adjust screw will be closed too much to the right, you feel heavy grinding and it may causes troubles.
- In case of break down or assemble mill, read user guide. Forced break down or assemble may cause troubles.
- Do not put mill near the fire. If mill will be exposed by too much strong fire, it may cause melting or deforming of mill.
- Dishwasher-dryers can not be used.
- If one cleans by scourer or strong cleanser mill may be scratched.
- If washed by water, use mill after perfectly well dried.
- In case of preserving, be care not to be touched and played by babies. As well, be care, not to be hit by direct sun shine, is required.