

MILLU

TEA

Ceramic Tea Mill

Take pieces apart • Assembling User Guide

USER GUIDE



Used by mill

MILLU

Easy

Tea Recipe



Ceramic

Green tea mill



Ceramic blade
without losing natural flavor

Granularity adjusting style
you can choose your own granularity



Cautions

You can grind the tea leave for about 20g.
(※ Body : Capacity of tea leave 52g /Body
Capacity of ground tea leave 20g)

It is exclusively used only for green tea.
(dried tea leave) Other tea leave are not
operative. All other food materials except
dried green tea may cause the troubles.

Names and features
of each part



Ceramic blade



Used stone mortar
typed ceramic blade
which can keep the
natural flavor of tea.

Granularity adjustment screw



You can choose the
thickness / fineness
of whatever you are
grinding.

With stopper



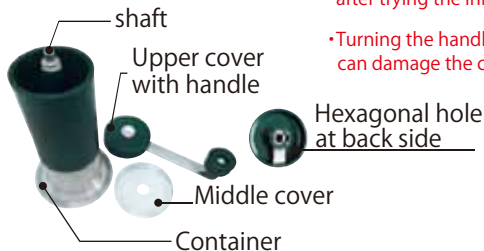
It is very stable to
grind due to the
stopper.

※In case of setting, four
points of the projection
are expected to be put
down side.

Please read before use


How to grind green tea

- The mill is set to fine grinding when shipped.
- Make adjustments to the powder roughness after trying the initial setting.
- Turning the handle with no tea leaves added can damage the ceramic blade.



1 Take out the upper and middle cover, put tea leave by spoon or likewise.



2 Close the middle cover.

※Set the smaller cover to the down side.



By setting hexagonal hole of handle to hexagonal part at the tip of shaft, upper cover should be closed.



4 At the stable and flat place, grip the handle firmly then turn the mill by clock wise.



5 tapping!
After grinding, tea leave will stick to ceramic blade and adjustment screw. Hit the container lightly for concentrating them in the center, and take the container out.



The function of granularity adjustment



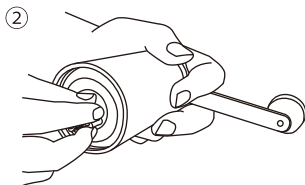
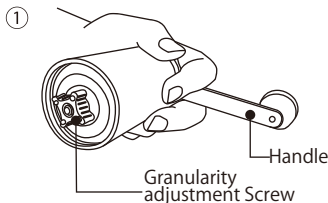
If you turn to the left, you can grind coarse granularity.



If you turn to the right, you can grind the fine granularity.

If you turn the granularity adjustment screw to the end of the right side, then return one round, you can grind the middle class granularity of coffee beans.

How to use granularity adjustment screw



Set the upper cover with handle, then by controlling it, turn the granularity adjustment screw

- ※ If you turn the granularity adjustment screw too right, the turning will become heavy, because of rubbing by ceramic blades each other. This may cause the troubles. If you can hear the sound by rubbing of blades, try to loosen the granularity adjustment screw a little bit left side.
- ※ If you turn the screw too tight, it may cause the crack or breaking of ceramic blade.

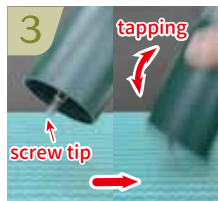
To take body and ceramicblade apart



1
Take the granularity adjustment screw out. (counter clockwise)



2
Remove the fixing pin and the lower blade while pressing the fixing pin.



3
Tap the tip of the screw part lightly on a cloth and remove the upper blade.



4
Take out the adjustment screw.

How to take care

After grounding the tea, take out the powder by tooth brush or likewise. If you do not use it for a long time, wash it well. Tea powder may stick to up and down side ceramic blades.

⚠ Caution

1. Ensure that there are no objects around when disassembling the mill.
2. When removing the ceramic blade, do not drop it or hit it against hard objects, as this can cause cracking or chipping.
3. After ceramic blade washed, use it after dried well.
4. Set each part firmly. Inappropriate setting may cause the inefficient operation or troubles.
5. If the setting will not be made properly, you can not grind the tea leave well or the raw tea leave may come back from the mill.

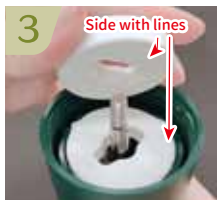
The way of assembling of body and ceramic blade



1 Set the adjustment ring to the body.



2 Try to adjust 3 hollows in the body to the projection of upper blades.



3 Set the lower blade with the side with small lines faced down.



4 Insert the slit part of the fixed pin to the overhang part of shaft of body.



5 Push the fixed pin according to the hole of the ceramic blade.



6 Turn the particle size adjustment screw with four protruding faces facing up and install. (Clockwise)

